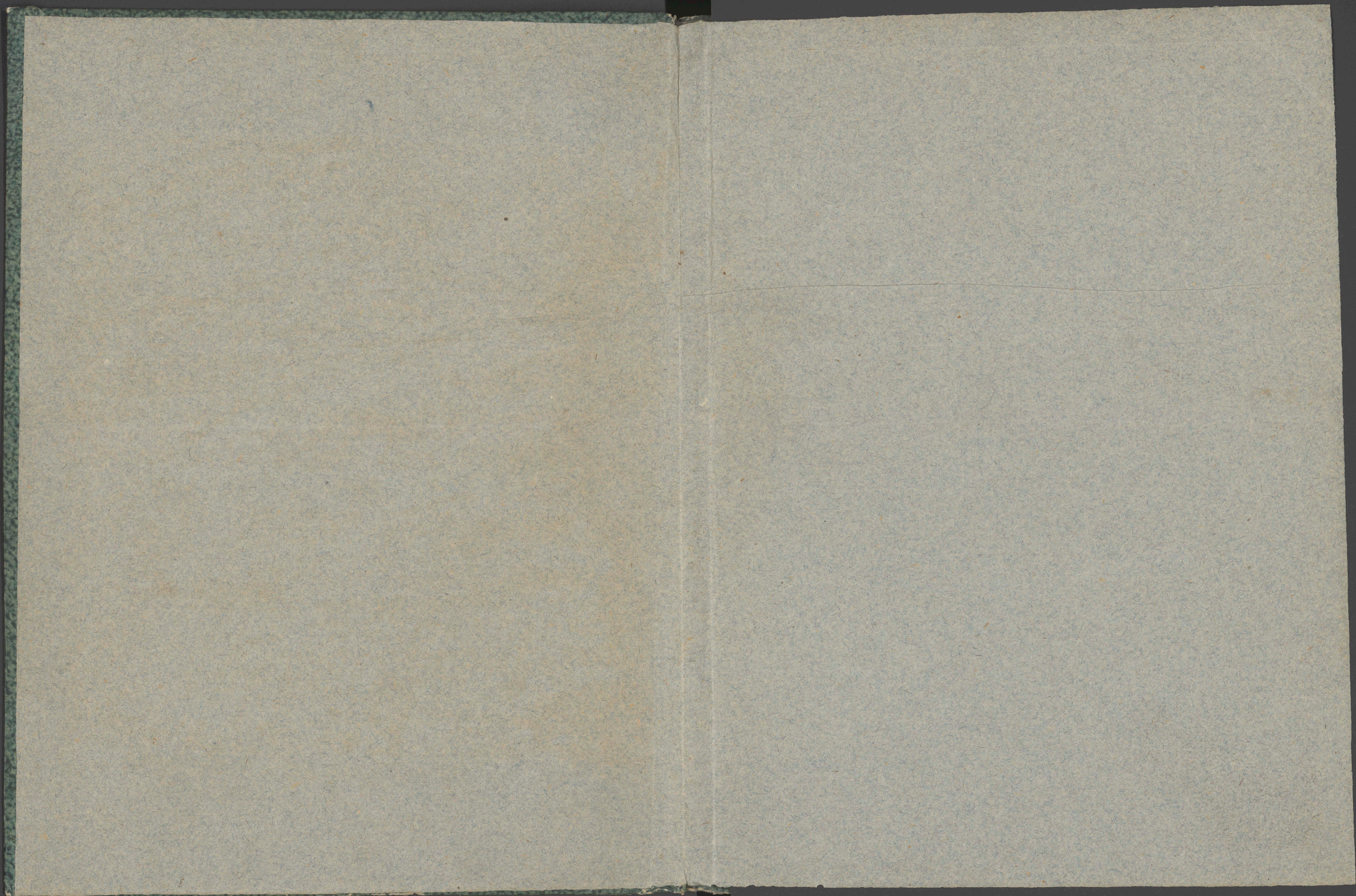


BIBLIOTEKA

Zakl. Nar. im. Ossolińskich

XVI. Q. 1. 886

*D. n. MF*



74

**Modus regulariter  
accentuandi lectiones  
Matutinales, prophetias  
necnon epistolas &  
euangelia.**

**ADLECTOREM.**

**Si quid in hoc vicij, cernas pugnare libello  
Emendare velis lector amice rogo,  
Sive itidem excuses si quae ratione valebis  
Nec tentes rabidi rodere more canis  
Penles qz nihil est ex omni parte beatum  
Qzq; error cunctis accidit ingenijs  
Nunc valeas felix, & longos viuito in annos  
Et super Phrygios Nestoresq; dies**

**CONTRA INVIDVM**

**Qui ducis vultus & non legis ista libenter  
Omnibns inuideas liuide nemo tibi,  
Ut gallus reprobat gemmā vel talpa lucernam  
Sic delirus homo nobile dogma fugit.**



**10.347**

*[Handwritten Latin notes in cursive script, mostly illegible due to fading and overlapping.]*

*Jon. Hall*

*8*



Vm regularis debitaq; pñunciatio vñiuscu  
iusq; vocis (que finis grāmatice profodia nu  
cupatur) vtilitatis pmagne (nedum in accen  
tuatione lectionū quarūcunq; ecclīasticarū, ve  
rum etiā in cuiusuis sententię expñsione) esse  
dinoscīt, vt id ferme latine lingue interpretēs  
edocuerūt & scripsisse liqde dinoscunt, pñfertim ipse Priscia  
nus author oīm grāmaticorū q̄ maximus, Ioannesq; lanuensis  
Catholicon identidē, nō minus pñecessariū & comodū esse pñ  
suasit. Singulariū tñ que dico cuius clerico ad cultū ordinato  
diuinū, hęc sciētia accētuandi est q̄ vtilissima, & summe opor  
tuna. Quare cauendū est, ne negligentī cōtrahat, sed priuata  
diligentiū cura pquirat. Quocirca vt q̄scq; clausule compe  
tens exitus sonorositatis habeat, in primis scitu dignū est, qd sit  
accentus. ¶ Accentus scđm Ioannē lanuensem in Catholicone  
diffinit sic, est regularis modulatio vocis facta in pñunciatiōe  
significatiua, pñcipalit̄ adiacens prime syllabe. Vel sic, est cer  
ta lex siue regula, ad eleuandā vel deprimendā syllabam vñis  
uscuiusq; particule orationis. Et dicit̄ ab ad & cantus, d mutata  
in c, & a in e, quasi ad cantū, siue iuxta cantū situs. Et est duplex  
Regularis videlicet & Irregularis. Regularis est qñ dictio accen  
tuat̄ scđm regulas artis grāmatice profodiam cōcernentes  
vt huius dictiōis dominus primā pducendo, & reliquas duas  
grauādo. Irregularis per oppositū. Sed qd dictum est in dictiō  
ne modulatio vocis, Vnde modulatio ē triplex. Metrica, Mel  
lica & Prosaica. ¶ Metrica est quę fit in carminibus poetarum.  
¶ Mellica est quę attenditur in cantilenis, carminibus siue tro  
pis. ¶ Prosaica est quę in oratione soluta attenditur, scđm re  
gulas datas ex Profodia, quę nostri est ppositi, pñcipalit̄ ad  
iacens vñi sillabe, ad innuendū q accentus pñdominans pñ  
cipaliter pñdominat̄ vñi syllabe in quā cadit, & inest ei tanq̄ sub  
iecto, pprio in quo est, licet ex consequenti dictiōni adiudicat̄  
illius syllabe tanq̄ illi in quo demonstrat̄, vt dicit Priscianus in  
libro de accentibus.

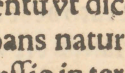
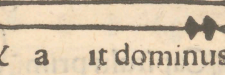
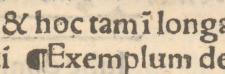
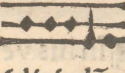
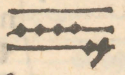
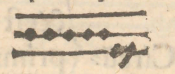
Xvi Qu. 1886

Est q̄ tñ deprimitur, & nō eleuatur. & causa  
tur duplr. Primo qñ fit depresso syllabe ab ac  
centu pñdominante in terciā, vt fit in subdistin  
ctiōe, & hoc tñ in bisyllabis & polysyllabis  
in dissyllabis semper se  
cunda deprimūt, vt hic  
¶ In polysyllabis vero dicit de vester.  
hñtibus penultimā longam  
ultima deprimitur.  
¶ In hñtibus autē penultimā  
breuē eadem penul  
tima deprimitur, vt hic  
Secundo qñ fit saltus a syl  
laba sup quam cadit pñdominans accentus in  
quintam & hoc tam i longa  
q̄ in breui ¶ Exemplum de  
celum & terrā, longa.  
¶ de breui exm.  
Est q̄ deprimūt & rur̄ (& a it dominus  
sus leuat̄ vt qñ fit eleuatio de vna in terciā, &  
hoc in subdistingtiōe in dictiōibus monosyl  
labis, hebraicis & barbaricis. ¶ exm  
dixit autē deus ad Abraam, vt descenderet.  
¶ Exm de Et hoc in subdistingtiōe  
monosyl one tñ, qñ in plena  
labis se ce rūt me. distingtiōe moderatū  
capit̄ accentū vt dicetur inferius.  
Est participans naturam grauis & acuti & est  
qñ fit depressio in terciā & in secundā leuatio  
& talis fit in dictiōibus monosyllabis barba  
ricis, hebraicis, in plena distingtiōe, seu in si  
ne particule clausule positis, vt hic.  
A ij.

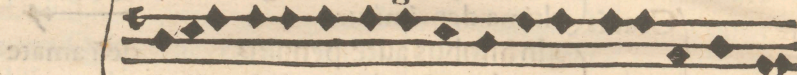
Accen  
tus est  
q̄drup  
lex.

Acu  
tus,

Mode  
ratus



Est qui incipiens a graui tandē in altū tollit & postremo & in puluerem reduces me rursus deprimif, dixit dominus ad moysen. & est quando tertia syllaba a fine alicuius clausule deprimif in quartam & penultima leuat in scd̄am & rursus vltima deprimif in tertiā. & hoc in illis quæ penultimam habent longam vt hic.



Passio domini nostri Iesu christi secundum lucam  
In his vero quæ sui penultimā hnt breuē, quarta ipsorū deprimitur tertia leuat, & penultima cū antepenultima itē deicit vt hic.



Sed iste iam cessit ab vsu nostro quis iube domine bene dicere tamē adhuc nōnulli eo vtunt vt religiosi & in passione

In fine orationis siue clausule nondū totaliter complete quo ad p̄fectionē, sicut cōmuniter fit in subdistinctionibus, & tunc talis dictio monosyllaba acuto accentu est p̄nuncianda vt patet in his & in silibus

Monosyllabā & in his & in silibus

exemplis vt Man<sup>o</sup> tue dñe fecerit me

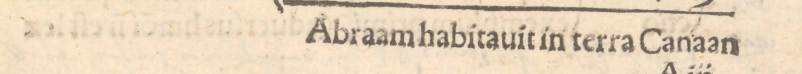
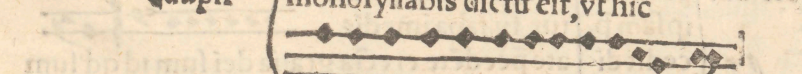
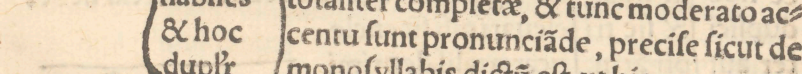
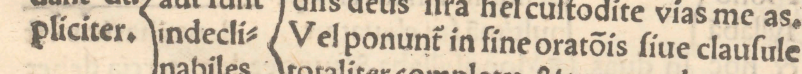
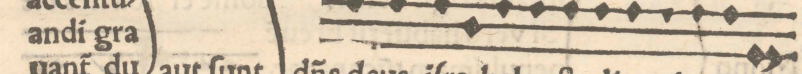
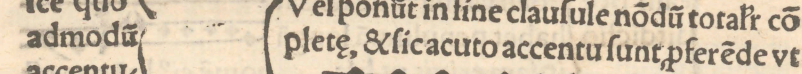
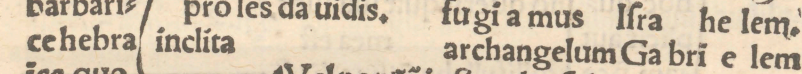
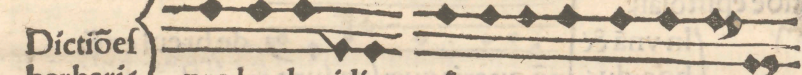
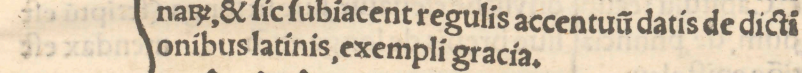
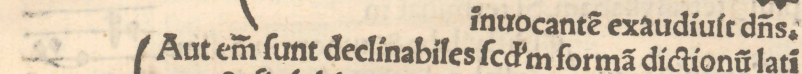
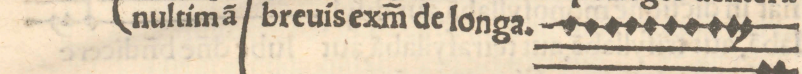
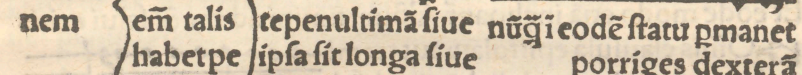
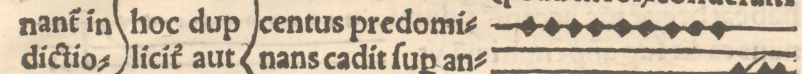
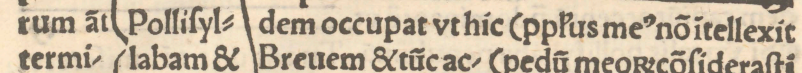
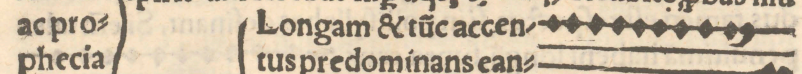
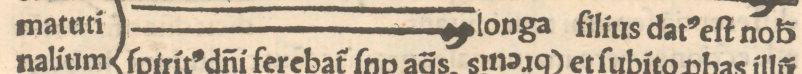
In fine oratiōis siue sententie totaliter cōplete vt fit in plena distinctiōe, & tunc talis monosyllaba moderato accētū nūerns mentiū ap̄te est p̄nuncianda est vt & exaudisti me

Excipiunt tñ dictiones enclitice, scilicet, q̄ ne ue que nō moderato sed graui accentu p̄ferunt vt hic dixit q̄

Disyllabam, & tūc accentus principalis semper cadit supra primā sillabā illius dictionis dñs ue.

Omnis clausula lecti

diffyllabe siue ipsa sit lōga, siue breuis. de  
matutinalium spirit<sup>o</sup> dñi ferebat sup aqs, s̄m̄. 19) et subito p̄bas illū Longam & tūc accentus predominans eandem occupat vt hic (pp̄lus me<sup>o</sup> nō intellexit Breuem & tūc accentus predominans cadit supra antepenultimā siue ipsa sit longa siue breuis exm̄ de longa.



Aut em sunt declinabiles scdm̄ formā dictionū latinarū, & sic subiacent regulis accentuū datis de dictionibus latinis, exempli gracia.

pro les da uidis. fugi a mus Isra he lem. archangelum Ga bri e lem.

Vel ponūt in fine clausule nōdū totalr̄ cōplete, & sic acuto accentu sunt p̄ferēde vt

dñs deus isra hel custodite vias me as.

Vel ponunt in fine oratōis siue clausule totaliter complete, & tunc moderato accentu sunt pronuciāde, precise sicut de monosyllabis dictū est, vt hic

Abraam habitauit in terra Canaan

A iij

¶ Conclufiões vero finales pphēciarū & te-  
nebrofarū matutinarū & vigiliarū quartam  
differentiā septimi toni imitant. *dicit dñs omnipotēs*

¶ Lectiones vero matutinales grauiacētū cōcludunt, habent  
dus tamen est respectus, si in pollisyllabas desinant. Si em̄ tales  
penultimā habent longā, supra ean-

dem capiūt accentū p̄dominantē vt,  
¶ Si v̄o talis pollisyllaba penultimā Tu autē dñe n̄ri miserere,  
habeat breuē tūc accent⁹ p̄domi-

nans cadit sup̄ an̄penultimā vt.  
Et eodē modo etiā inchoant Cōuertimini ad me & salui eritis

¶ Omnis clausula epistolaz aut termi-  
nat in dictionē monosyllabā, aut disyl-  
labā, aut trisyllabā, aut tetrasyllabā, aut  
plūsq̄ tetrasyllabam. Si terminat in

¶ Capitulū secun-  
dum, de p̄nnciā  
tiōe epistolaz.

In vnā &  
hoc du-  
pliciter aut  
eam p̄ce-  
dit dictione

¶ Mono-  
syllabā  
& hoc  
duplici-  
ter aut

In duas,  
& sic tri-  
p̄r̄ at̄ n.  
ipsam p̄-  
cedit dictione

¶ Dissyllaba & tunc prima illius  
disyllabe eleuatur, siue sit longa (scriptū est  
siue breuis de longa exm̄ *mendax est*

de breui exm̄  
nō querit quā sua sunt  
mea est

¶ Pollisyllaba & sic talis si  
habet penultimā longā  
ipsam erigit vt hic, *nomē ei⁹ loā nes est*  
Si vero habuerit breuē  
penultimam tūc antepe-  
nultimā sui eleuat, vt *deus charitas est*

¶ Monosyllaba & tunc eadem tertia debet  
eleuari nisi sit encle-  
tica ga talis deprimi-  
tur, syllaba imedis  
ate p̄cedere erecta gratia dei sum id qd̄ sum  
exemplum primi, *caduersus hmōi n̄ est lex*

¶ Dissyllaba, & sic ei⁹  
prima eleuat, siue sit  
longa vt hic.

predica v̄bū ist⁹ & dic  
& affer ad me  
dixitq; hoc rex  
mādatq; hoc lex

exm̄ ij. p̄cedētis

filius dei est hic

¶ Pollisyllaba & sic du-  
pliciter at̄ ha-  
bet penul-

¶ Longa m̄ & sic eam  
eleuat vt hic *finis illorū mors est  
volui venire ad vos*

¶ Breuē & tunc an-  
tepenultimam eri-  
git vt hic. *dixit dominus ad me,*

¶ Monosyllaba, & sic eadē eleuat, nisi  
sit enclitica, ga talis semp̄ deprimi-  
t̄ erecta, exm̄ qm̄ deus erat cū illo.

¶ Dissyllaba & sic  
prima eius ele-  
uat, siue sit lon-  
ga, vt hic *qm̄ dixite eis  
siue breuis vt hic*

¶ Dissyllabā  
& hoc tri-  
p̄r̄ aut em̄  
eam prece-  
dit dictione

¶ X̄inuestigabiles vie ei⁹  
apperiens os suū dixit.

¶ Longā &  
sic eandē  
eleuat vt  
hic, *in honore dei  
baptisati sum⁹*

¶ Pollisyllaba, & sic dupl̄  
aut enim talis habet pe-  
nultimam

¶ Breuem & tunc antepe-  
nultimā eleuat vt hic.

¶ Sufficit tibi gratia mea  
transiliens colles  
in auribus meis

A iij.

*Handwritten notes in the top right margin, including 'exm̄ ij. p̄cedētis' and other annotations.*

*Handwritten notes in the middle right margin, including 'exm̄ sc̄pi.' and other annotations.*

*Handwritten notes in the lower middle right margin, including 'Longā & sic eandē' and other annotations.*

*Handwritten notes in the bottom right margin, including 'Sufficit tibi gratia mea' and other annotations.*

*Extensive handwritten marginal notes on the left side of the page, including 'Capitulū secundum' and other commentary.*

Monosyllaba & sic eadē eleuat, nisi sit enclitica, q̄a tunc deorsum pellit syllaba immediate p̄cedēte erecta exm̄ p̄mi

Longam et hoc tripliciter aut em̄ talē trissillabam precedit dictio

exm̄ sc̄d̄i spe gaudē. viditq̄ sedentē

Disyllaba, & tunc vltima eleuat vt hic Quamuis sc̄d̄m vsuam precedit dictio prima disyllabe eleuat ipsum audite. vt hic.

Pollisyllaba & tunc talis siue habuerit longam siue breuem vltimā sui eleuat capite trissyllabe depresso

Trissyllaba & hoc dupliciter, q̄a vel talis habet penultimam

Vsus tñ nonnullarū ec̄ (vt hic) clesiarū habet, q̄ si hm̄ōi pollisyllaba precedēs trissyllaba fuerit ex penultima longa tunc eandē eleuat. Si vero ex penultima breui, tunc antepenultimam sui eleuat exm̄ sc̄d̄i. in dño cantā bo uat exm̄ (dixerūt euntes interpretatio sermonū p̄mi. dei ordinatōi resistit (hereditate dñi morabor

Vna tantū, & tūc vltima syllaba dictiōis immediate precedētis eleuat regularit̄ vt hic Duplex

Monosyllaba & sic dupliciter, q̄a tūc prima earū (nō littera sed spiritu) eleuat, p̄ quē fecit & secula nisi sit enclitica. exm̄ p̄mi. q̄ natus est ex spiritu.

Breue & sic tripliciter at em̄ eam precedit dictio

Disyllaba, & tunc talis primam sui eleuat vt hic. in falsis fratribus Pollisyllaba, & tunc si talis habet penultimam longam ipsam eleuat vt hic. Si v̄o habuerit penultimam breuem, tūc antepenultimā sui erigit, vt hic.

Exm̄ sc̄d̄i p̄cedētis. surrexitq̄ & abiit. dedit illi coronā glorie

Longam & tunc prima illius tetrasyllabe eleuatur, siue sit longa siue breuis vt hic. in hoc v̄bo instaurat̄

Tetrasyllaba & hoc dupliciter aut em̄ talis habet penultimam. Monosyllaba, & tunc talis eleuatur nisi sit enclitica, quia talis deprimi.

Breuem & hoc fit tripliciter aut enim ipsam precedit dictio

Exm̄ primi. Exm̄ secūdi. Breuē & sic tripliciter at em̄ eam precedit dictio

in p̄ disyllaba p̄cedētis habe de med

lata syllaba p̄cedētis p̄cedētis p̄cedētis

q̄ tetrasyllaba p̄cedētis p̄cedētis p̄cedētis

trissyllaba p̄cedētis p̄cedētis p̄cedētis

trissyllaba p̄cedētis p̄cedētis p̄cedētis

trissyllaba p̄cedētis p̄cedētis p̄cedētis

trissyllaba p̄cedētis p̄cedētis p̄cedētis

trissyllaba p̄cedētis p̄cedētis p̄cedētis

trissyllaba p̄cedētis p̄cedētis p̄cedētis

¶ Nonnulli vero vsum potius q̄ artem respiciētes penultimam huius polysyllabe si est longa eleuare solent, vt hic in tefauris pecunie  
 Si vero sit de penultima breui, tunc ante penultimam eriguunt. Primus tñ modus est regularior, & cōuenientior quare magis discretio spirituum tenēdus, posterior v̄o vt abusu v̄o vitradus

Longam & tūc illā syllabā quæ precedit antepenultimam, hoc est quartam a fine eleuat, siue talis sit longa, vt, siue breui

hic In tempore visitationis, uis, ad utilitatem, dilectio sine simulatiōe, in hila ri tate.

Cōuenienti tñ est vt talis syllaba quarta si est breuis deprimatur & quinta eleuet vt hic in manu mediatoris

Breuiem, & tunc si quinta syllaba a fine sit lōga ipsam eleuat vt

hic Si vero quinta syllaba a fine ne fuerit breuis tūc sex vt nō cōturbemini ta est leuanda vt hic, vicissitudinis obūbratio.

¶ Capitulum tertium de facta est reconciliatio, p̄nuntiatiōe euangeliorū, per similitudinem.

¶ Omnis clausula sacri euangelij aut terminat in dictionem monosyllabam, dissyllabam, trissyllabam, plusq̄ trissyllabam.

¶ Monosyllaba, & tūc hec ipsa monosyllaba precedens deprimi regulariter quacūq̄ ga p̄a maior me est

¶ Si in monosyllabam & alia dictione sibi anteposita (vado & venio ad vos) hoc tripliciter vt in his patet exemplis, & pater in me est

¶ Si in monosyllabam & hoc tripliciter vt in his patet exemplis, & pater in me est

¶ Si in monosyllabam & hoc tripliciter vt in his patet exemplis, & pater in me est

¶ Si in monosyllabam & hoc tripliciter vt in his patet exemplis, & pater in me est

¶ Si in monosyllabam & hoc tripliciter vt in his patet exemplis, & pater in me est

¶ Si in monosyllabam & hoc tripliciter vt in his patet exemplis, & pater in me est

¶ Si in monosyllabam & hoc tripliciter vt in his patet exemplis, & pater in me est

¶ Si in monosyllabam & hoc tripliciter vt in his patet exemplis, & pater in me est

¶ Si in monosyllabam & hoc tripliciter vt in his patet exemplis, & pater in me est

*Handwritten marginal notes on the left side of the page, including phrases like 'et in syllaba longa', 'plusq̄ tetra', 'hoc dupliciter', 'aut em talis habet penultimā', and various other annotations.*

Dissyllaba & tūc vltima illius dissyllabe monosyllabam precedentis deprimi vt

Potest tñ nō ab usiue prima tā mādatq̄ h lex

¶ Dīpe viuet p̄p̄ me (lis dissyllabe ga ego sum vsq̄ adhuc, gaudiū v̄m plenū sit deprimi vt ego mitto vos

Longam & tūc vltimam sui deprimi. Arti em nihil repugnaret si penultima talis polysyllabe detrudatur capite eiusdē erecto, exm primi

Polysyllaba & sic dupliciter aut em habet talis penultimā longam at breuē.

ille pbatus est pater vester p̄fectus est, ga p̄pheta est nomē ei' loānes est

Breuē, & tūc eadē pariter cum vltima deprimi vt hic.

¶ Monosyllaba, & tūc talis deprimi scdm (p̄a meus agricola est, vsq̄ vt hic

¶ Poterit tñ etiam talis dissyllaba finalis, quam dixit martha ad iesum (monosyllaba preces opa tua quę facis dit caput suū grauas re vt hac.

¶ Nisi talis monosyllaba fuerit enclitica, qui ait q̄ sp̄ deprimi vt hic.

¶ Dissyllabā, & sic tripliciter aut aut em eā precedit dictione

¶ Dissyllaba & sic semp vltima dissyllabe precedentis deprimi, siue sit longa siue breuis (filius tuus viuit gaudio magno valde

¶ Longam & tūc vltima eiusdē polysyllabe deprimi vt h.

¶ Polysyllaba & hoc dupliciter aut em habet penultimā breuē & c̄, vt infra.

¶ Polysyllaba & hoc dupliciter aut em habet penultimā breuē & c̄, vt infra.

¶ Polysyllaba & hoc dupliciter aut em habet penultimā breuē & c̄, vt infra.

¶ Polysyllaba & hoc dupliciter aut em habet penultimā breuē & c̄, vt infra.

¶ Polysyllaba & hoc dupliciter aut em habet penultimā breuē & c̄, vt infra.

¶ Polysyllaba & hoc dupliciter aut em habet penultimā breuē & c̄, vt infra.

*Handwritten marginal notes on the right side of the page, including phrases like 'et in syllaba longa', 'plusq̄ tetra', 'hoc dupliciter', 'aut em talis habet penultimā', and various other annotations.*



Breuem, & tunc talis penultima brevis pariter cum vltima deprimitur vt hic.

Longa, & sic semp prima talis trisyllabe deprimit, quacumque dictione preter encliticam precedente vt hic.

licut dictum est p pphetam. caput Ioannis baptiste. ipsum audite.

Trisyllaba, & hoc dupliciter aut enim talis habet penultimam

Monosyllaba, & tunc talis monosyllaba semp deprimit vt hic & clausa est ianua domine vt videam.

Dissyllaba, & tunc vltima ei depelli nisi videret christum dominum illi soli seruiet.

Breue & sic triplix at enim ipsam preceperit dictione

Pollisyllaba, & tunc talis si habet penultimam longam vltimam sui deprimit vt (frater meus non fuisset mortuus sine me nihil potestis facere)

Si vero talis polisyllaba precedens habuerit penultimam breuem, tunc eius penultima cum vltima detrudatur, vt hic propter filium hominis in nomine domini

Plusquam trisyllabam & hoc dupliciter aut enim Longam, & tunc talis antepenultimam sui cum sequentibus deprimit vt hic Breuem & tunc &c. & turbis iudeorum omnes generationes.

talis habet penultimam

Breue & tunc illa syllaba deprimit quae precedit antepenultimam benedicta tu in mulieribus hoc est quarta a fine (ite omdite vos sacerdotibus ne sui vt hic. circa frequens ministerium.

Declinabiles, & sic etiam secundum regulas de latinis dictionibus superius dicitur & dicitur Ezechie nomine Ananias precepit deus Israel.

In epistolis & sic conspiciuntur dupliciter aut enim sunt.

Indeclinabiles & sic quot syllabarum fuerint semper penultima earum detruditur vt hic prophetam Iohel venit in Bethleem

Si autem tales in clausula epistolarum precedant immediate dictiones latinas dissyllabas in fine clausule positas, tunc talium dictionum barbaricarum eleuatur vltima, dictionis finalis latine depressa vt

Dictiones Barbarice & Grece si ponuntur.

Declinabiles, iuxta formam dictionum latinorum, & sic etiam accentui de latinis dictionibus dato subiacent, vt in his exemplis

In euangelij & sic conspiciuntur dupliciter aut enim sunt

dixit angelus marie. secundum Iohannem dixit dominus Petro.

Dissyllabe tunc caput sui grauantur vt hic. genuit Aram de tribu Afer genuit Achas in ciuitate David genuit Salmon genuit Iacob Pollisyllabe &c. genuit Iesse.



Possit syllabe & tunc penultima  
 fui deprimunt syllaba imme  
 diate pcedete sursum pro in ciuitate nazaret  
 tracta, vt in his exēplis infirmabat Cafarnaū  
 genuit Salatiel ge:zorobabel,  
 secus stagnū genezaret, genuit eleazar,  
 genuit Isaac,  
 pambulabat Iericho. nomē eius elizabet, gen, lozaphat.  
 ¶ Orationū vero interrogatiuarū, siue ponunt in lectionibus  
 matutinalibus siue in pphetijs, siue in epistolis aut in euange  
 lijs semp sunt acuto accentu pronūciande, de qbus p ordinem  
 exempla patebunt. & primo de lectionibus matutinalibus &  
 prophecijs. ¶ De lectionibus exm.

De epi  
 stolis

Indica mihi cur me ita iudices, qs em cognouit sentum dñi,  
 Quare hoc fecisti, qd statim aspiciētes in celum,  
 quid tu vides Ieremia, dic mihi qd habes i domo tua.  
 quid vis fili mi, Saule saule quid me psequeris  
 qd faciam tibi o custos hominū

¶ De euangelijs  
 Aliud exem  
 plum

vbī est q natus est rex iudeorū, quō possunt hec fieri  
 qs reuoluet no: lapit: ab ho: mo, rabi: vbī habitas,  
 quantū debes dño meo, quis es tu dñe  
 quid hoc audjo de te, an de aliquo alio  
 simon diligis me plus his, qs est q loqt blasphemā  
 vt veniat mater dñi mei ad me an dicere surge & ambula

q̄lis est hic, quō legis, quē q̄ris  
 quid fecisti ppheta es tu tu qs es, qd facitis  
 qs peccauit helias es tu qd perā,

¶ Similiter de clausulis responsi  
 uis & relatiuis iudicandū est qa  
 videlicet tales etiam sinē sui nō sum  
 acuūt vt patet in his exēplis (septem  
 es tu etiam, non,  
 possumus, quā,  
 nescio

¶ Tituli sup accentuationē epistolaz beati Pauli

Lectio epistole bñ pauli apostoli ad Romanos ad Corinthios  
 ad Hebreos,

ad Philipenses (ad Thessaloniceñ, ad Thitum,  
 ad Galatas. Coloffenses. ¶ Titu: sapientie,

Lectio libri sapientie Lectio epistole beati Ioānis apostoli

Lectio episto. beati petri apli. Lectio epistole beati Iacobi apli.

Lectio Iſaie prophete Lectio Iohelis, pphete Lectio lib. regū  
 Danielis, pphete Machabeorum

¶ Titul: libri  
 Apocalipsis, Lectio li. Apocalipsis be: Ioānis apli

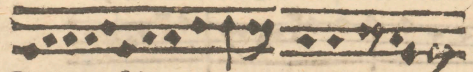
¶ De conclusiōe epistolaz.  
 Conclusio regulariter debet fieri ad minimum in quinta,  
 sexta septima, ad maximū vero in octaua, nona, & non excede  
 re debet nonarium numerum. ¶ Exempla.

Vel sic, sed induim: dñm Iesum christū, sed indu: dñm Iesum christū

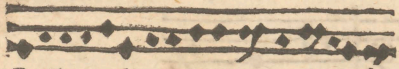
Vel sic, & in ple. sanctorū detentio mea, sanctorū detētio mea

Vel sic, Ipsi honor & glor, in secula se, am, in secula seculorū amē.

¶ Tituli sacri euangelij.



Sequentia sc̄ti euāgelij sc̄d̄m Matheū,  
Ioannem



Sequentia san, euan: secun, Marcū  
Lucam,

¶ Initia euangeliorū.



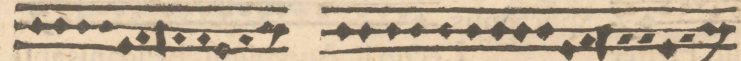
Initium sancti euan: sc̄d̄m Lucam  
sc̄d̄m Marcū      secundū Matheū  
Ioannem

¶ De conclusione euangeliorū

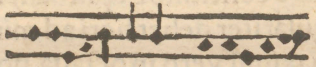
¶ Conclusio euangelij in longa naturaliter sillaba debet fieri  
aut monosyllaba, & etiā ad minimū in q̄nta, sexta, ad maximū  
vero in octava & nona. vt in exemplis      Vel sic



Beati q̄ audiūt ver: dei & culto: illud. verbū dei & culto. illud



& reuerſa est. i. do. suā Iesus aut̄ abscōdit se & exiuit de tēplo



Plenū gratia & veritate

¶ Impressum Cracouię, in edibus

dn̄i Ioannis Haller. Anno,

Christi M. D. XVIII.

*Handwritten Latin text in a cursive script, likely a library or ownership record.*



976/9

13316

9/14/5



